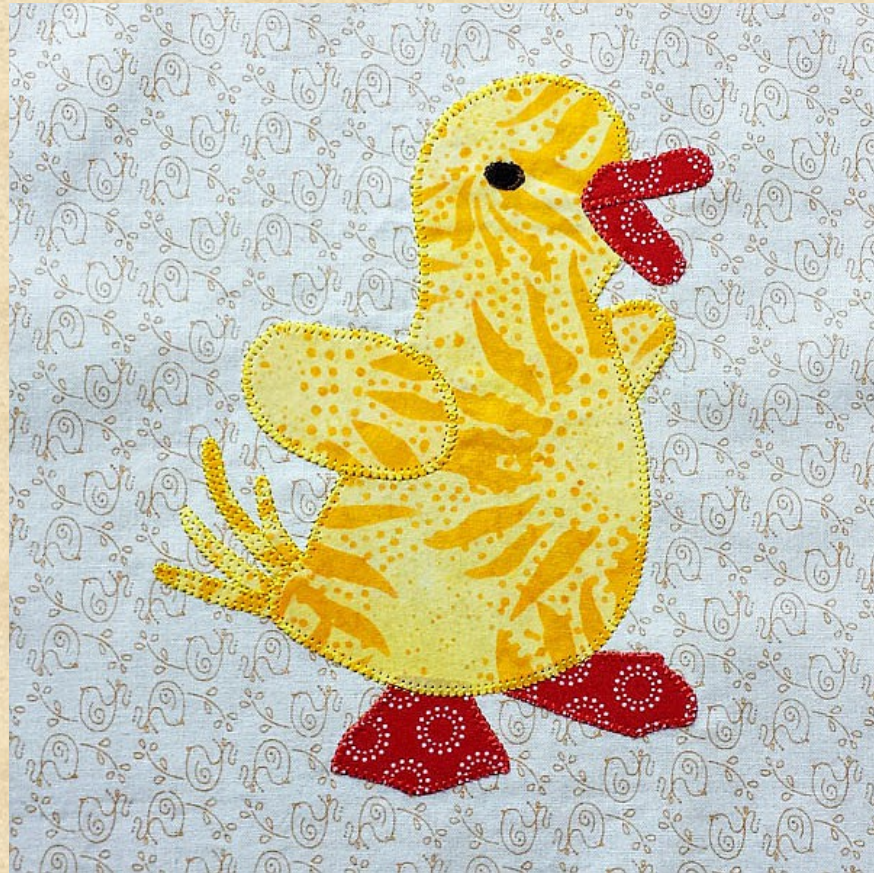


Barnyard Bash BOM

Block #5

Dottie the Duck



Pumpkin Patch Patterns



by Beatrice Rieske

PPP038-EIN-05

BARNYARD BASH - Block #5

Dottie the Duck

Please read all instructions carefully before starting the project and make sure you understand each step.

Fabric requirements and cutting instructions are for the whole quilt. For block #5 you need one 9" beige square for the background and scraps of yellow, red, dark brown and black for the duck.

MATERIALS

- $\frac{5}{8}$ yd beige fabric for the background of the blocks
- $\frac{5}{8}$ yd purple fabric for the background of the blocks
- $1 \frac{1}{8}$ yd yellow fabric for the sashing and the binding
- $\frac{7}{8}$ yd purple fabric for the border
- $\frac{1}{4}$ yd each (or assorted scraps) of the following colours for the animals:
 - medium green
 - black
 - cream
 - grey
 - medium pink
- $\frac{1}{8}$ yd each (or assorted scraps) of the following colours for the animals:
 - yellow
 - red
 - dark brown
 - light brown
 - white
 - light pink
 - light green
- $\frac{3}{8}$ yd orange-brown fabric for the animals (or assorted scraps)
- 45" x 55" batting
- 48" x 58" backing fabric
- Neutral-colored thread for piecing
- Rotary cutter, ruler & mat
- Quilting thread
- Machine embroidery threads to match the appliqué fabrics
- Fusible webbing
- Tear-away or wash-away stabilizer
- Sewing machine
- General sewing supplies

FINISHED QUILT SIZE

42" x 52"

FINISHED BLOCK SIZE

8"

NOTE

It is recommended that fabrics be 100% cotton, pre-washed and well ironed. Requirements are based on fabric with a usable width of 40". Seam allowance is 1/4".

This is a good project to use up scraps from your stash. You don't need to use the same fabrics in all the blocks. The animals will look more interesting if they are not completely colour-coordinated.

For printing the templates make sure that the automatic resize and fit to page options of Adobe Acrobat Reader are turned off and "actual size" is selected! There is a reference square on one of the pattern pages. Please print this page first and check that the sides of the square measure 1".

The placement guides will help you assemble the pieces. They are **not** to be used for tracing and cutting templates.

All templates on the pattern pages are in reverse of the actual finished design and therefore suitable for fusible appliqué. Should you wish to use another method of appliqué, please consider that you might have to flip the templates before tracing or your finished design might turn out a mirror image of my design.

Working with fusible webbing enables me to appliqué very small pieces. If you consider any of the pieces too small to appliqué, feel free to embroider them by hand or machine.

CUTTING

From the width of both the beige and purple background fabrics cut

- two 9" strips each
crosscut six 9" squares for the blocks

From the width of the yellow fabric cut

- four 2 1/2" strips
crosscut sixteen 2 1/2" x 8 1/2" strips for the vertical sashing

- five 2 1/2" strips
crosscut five 2 1/2" x 32 1/2" strips for the horizontal sashing
- five 2 1/4" strips for the binding

From the width of the purple border fabric cut

- five 5 1/2" strips

PREPARATION

The pattern pieces are already reversed, ready for fusible appliqué. Trace the designs onto the smooth side of the fusible webbing and cut them out roughly beyond the lines.

Iron the shapes onto the wrong side of the respective fabrics and cut them out carefully on the lines.

APPLIQUE

It is recommended to first assemble the animals on the pressing sheet before ironing them to the background fabric. Add the templates in alphabetical order, according to the letters on the pattern page. Let cool well before removing from the pressing sheet. Iron carefully in place, centering it on the background fabric.

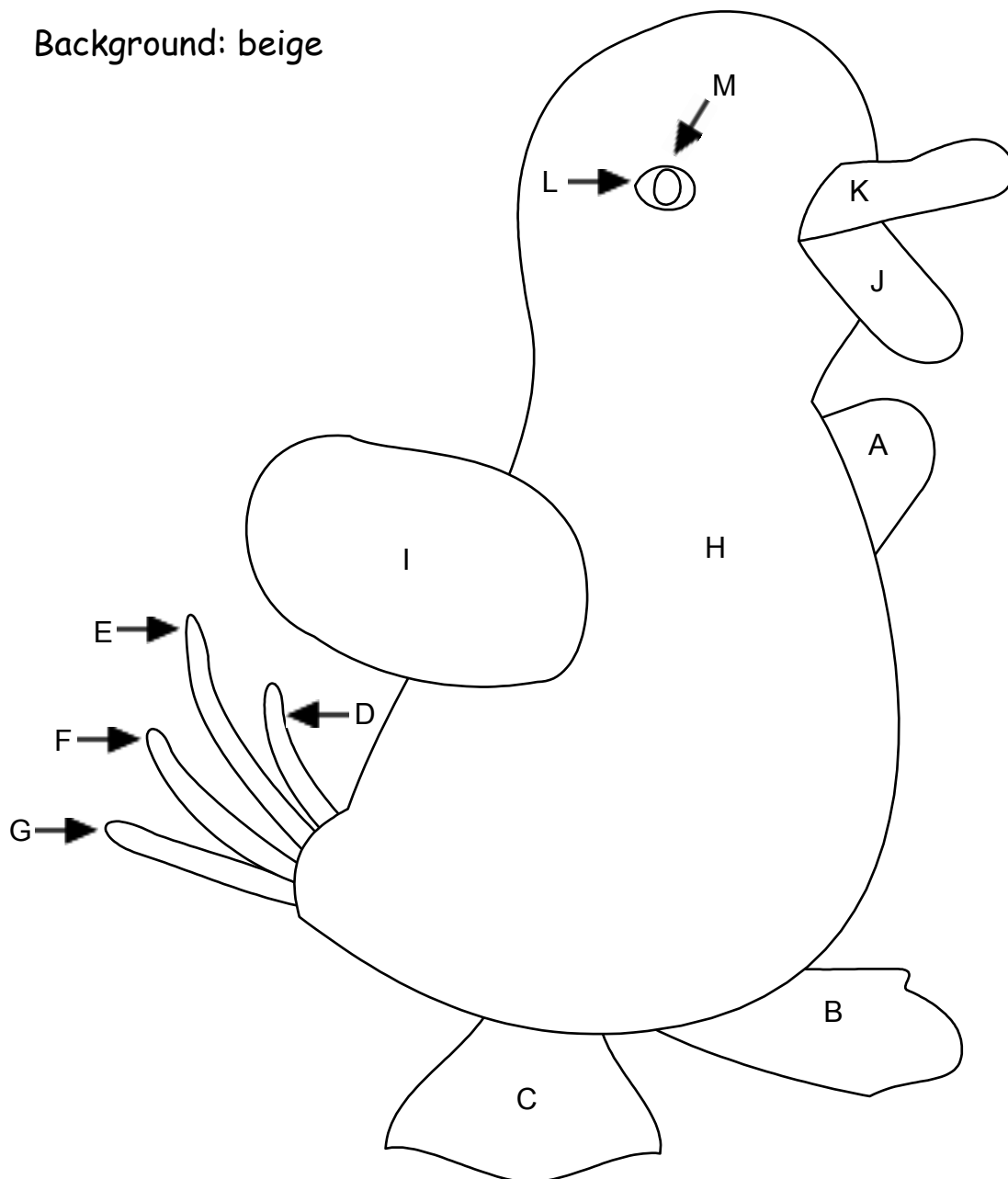
EMBROIDERY

Place the stabilizer underneath your blocks. Blanket-stitch around each of the appliqué shapes with the matching embroidery thread. If your machine does not have a blanket stitch you can also use satin stitch or stitch by hand with one strand of matching hand embroidery thread. Embroider details.

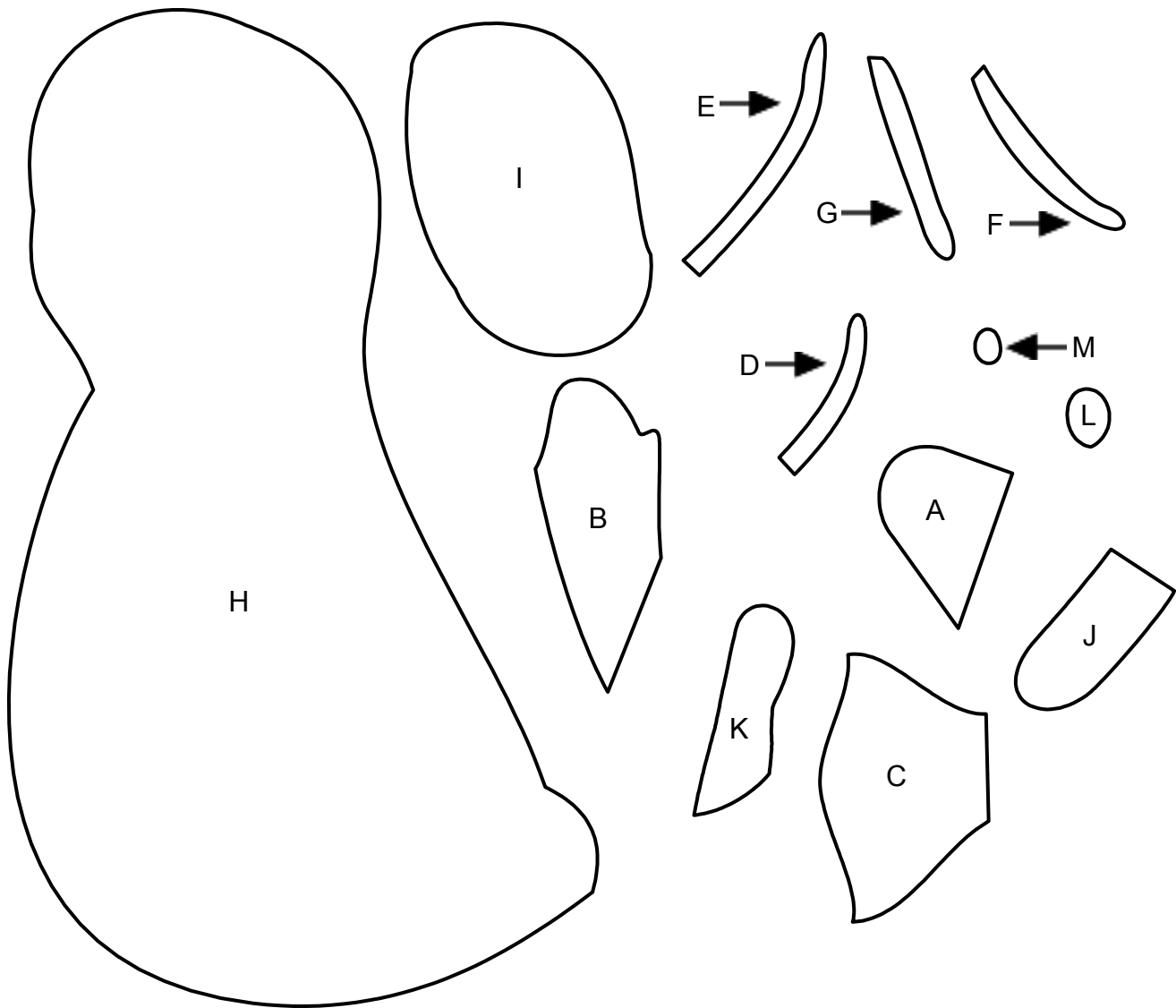
Remove stabilizer. Press block. Trim block to 8 1/2" square.

Dottie the Duck - Placement Guide

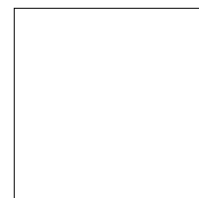
Background: beige



Dottie the Duck - Templates (reversed)



- A, D, E, F, G, H, I: Yellow
- B, C, J, K: Red
- L: Dark Brown
- M: Black



This square should measure 1" when printed

Every effort has been made to ensure that the pattern contents are accurate and complete. Pumpkin Patch Patterns cannot be responsible for human error, printing errors or variations in workmanship.

All items enclosed are protected by copyright and may not be copied or reproduced without prior written consent.

All my instructions, photographs, designs, projects and patterns are intended for the personal use of the retail purchaser only. Without prior written consent they may not be used for any commercial purpose.

Copyright 2017 by Beatrice Rieske

Pumpkin Patch Patterns



by Beatrice Rieske

Chilliwack BC Canada

pumpkinpatchbc.com

beatrice@pumpkinpatchbc.com

Quilts designed with Electric Quilt Software



THE ELECTRIC
QUILT COMPANY

Software, books and printables for quilters

electricquilt.com